

SHEET METAL

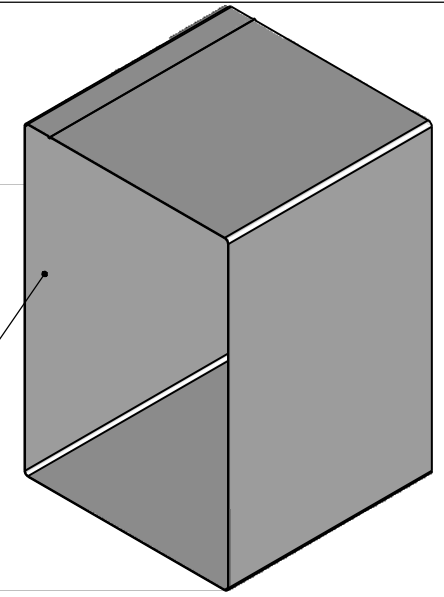
FOLDER # _____ DRAWING # _____ SHEET # _____
 PROG. # _____ PUNCH ONLY
 PROGRAM # xxxxxxxx-xx-xxxxxx-x-0xxxx

078/2638-82B-2-O005

MAT'L	16GA 316L SS 1 PVC
S/S	120.500 X 26.000
P/S	119.530 X 24.310
BR	0.375
SB	0.233 @ 90°
M/P	
NOTES	LASER

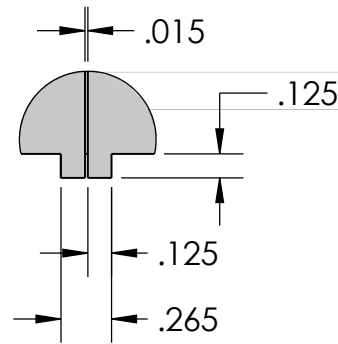
3.060 → ← 21.045

REQ 1 PC

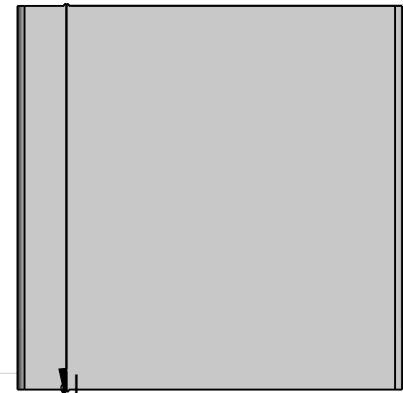


INNER CHAMBER
PVC SIDE

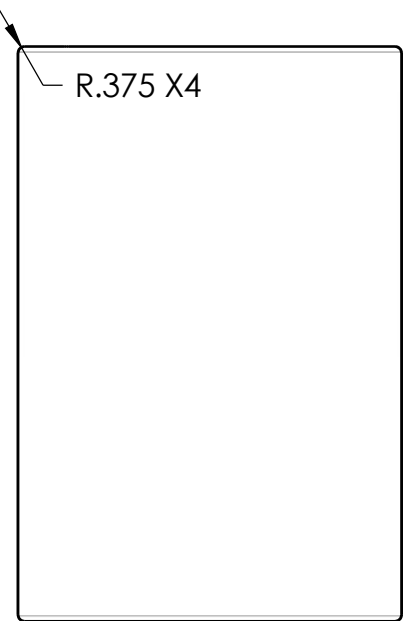
CHAMBER TUBE



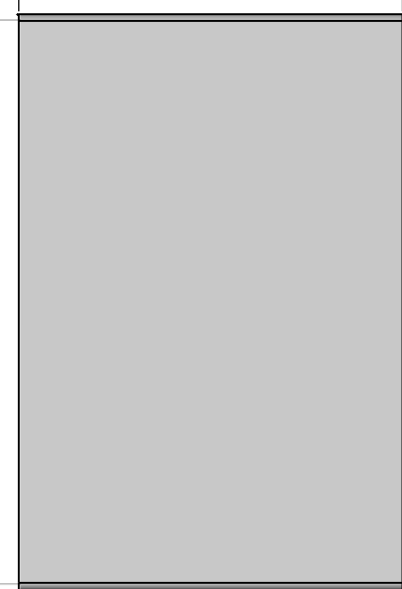
DETAIL J
SCALE 1 : 1



→ ← 24.120



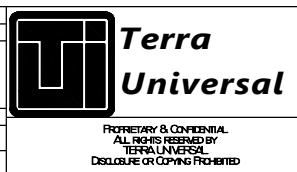
→ ← 24.060



REVISIONS			
RV#	DESCRIPTION	DATE	BY
NC	INITIAL RELEASE	10-5-17	JR
1	MODIFY TUNNEL FOR WELDING MACHINE	3/10/20	DP

MATERIAL SPEC.	FINISH SPEC.
316L SS	

UNLESS OTHERWISE SPECIFIED, DIMENSIONS ARE IN INCHES	
TOLERANCES ON:	
.XX DECIMALS ± .03	X' ± 1"
.XXX DECIMALS ± .010	X/X ± 1/64
SIGNATURES	
ISSUED BY:	DATE
JUAN R	3/10/2020
REF #:	



TITLE	
PASS-THROUGH, CLEANSEAM CLEANMOUNT 316L SS 24W X 24D X 36H ISOLATED INTERLOCK FLOOR MOUNT WITH RAMP	
A	2638-82B-2-316
SCALE	SHEET 4 OF 25