

# Quantitation of Fentanyl, Norfentanyl, Buprenorphine, and Norbuprenorphine in Urine Using SCX-XTR Tips and LC-MS/MS

**Author:** Evan DiVirgilio<sup>1</sup>, Casey J. Snodgrass<sup>2</sup>, William E. Brewer<sup>1</sup>

<sup>1</sup>DPX Technologies, <sup>2</sup>Hamilton Company

## Introduction

Fentanyl and buprenorphine are potent analgesics making them medicinally appealing and easy to abuse. Thus, they are two of the most common analytes monitored in clinical and forensic laboratories. Due to their high potency and low dosages, urinary concentrations are much lower than other common opiates/opioids. This leaves most laboratories struggling to increase the sensitivity and speed of their methods. This method, using DPX INTip™ technology with Strong Cation Exchange (SCX) sorbent, promotes an easy, fast, and sensitive method to help laboratories increase efficiency of detecting these compounds and their metabolites.

## Materials and Methods

Microplates containing urine (200 µL), 100 µL of acetate buffer, and 10 µL of ISTD are loaded on to the Hamilton Microlab® NIMBUS96. Additional microplates are filled with 900 µL 0.1 N HCl (wash #1), 600 µL of methanol (wash #2), and 300 µL 78:20:2 dichloromethane/isopropanol/ammonium hydroxide (DCM/IPA/NH<sub>4</sub>OH) elution solvent. XTR tips containing 5 mg of SCX in a 1 mL Hamilton format are then conditioned by aspirating 30% methanol solution from a solvent

reservoir. Sample solutions are aspirated and dispensed five times in order to bind the analytes of interest to the sorbent. Three separate 300 µL aliquots of wash solvent #1 are then aspirated and dispensed to remove salts and other common matrix interferences. Two separate 300 µL aliquots of wash solvent #2 are then aspirated and dispensed to remove common matrix interferences. Target compounds are eluted by aspirating and dispensing 300 µL of DCM/IPA/NH<sub>4</sub>OH solution three times. The elution solvent is then solvent evaporated and reconstituted in 100 µL of 20% methanol (aqueous). LC-MS/MS analysis was performed using a Sciex 6500+ triple stage quadrupole mass spectrometer coupled to an Agilent 1260 HPLC system. Chromatographic separation was performed on a Phenomenex biphenyl (2.6 µm; 50 x 3.0 mm) column with a 5 µL injection.

### Benefit Highlight

- 96 samples in < 15 minutes

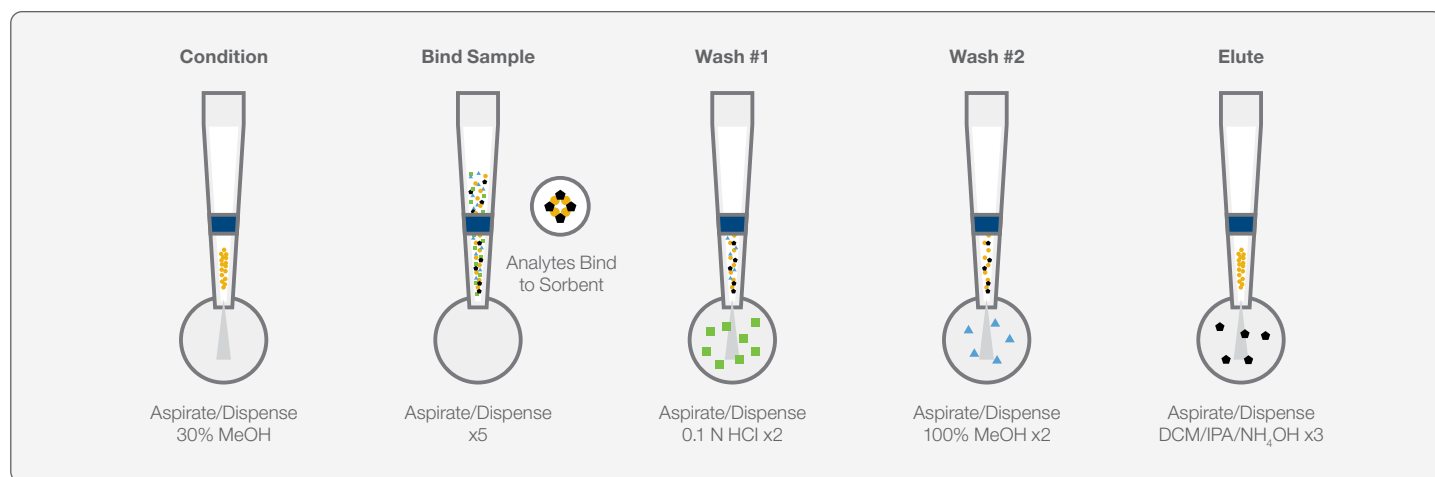


Figure 1: Schematic of INTip Solid Phase Extraction (SPE) method.

## Results and Discussion

Analytical results are linear, accurate, and precise. Correlation coefficients ( $R^2$ ) were greater than 0.99 over the concentration range of 0.2–50 ng/mL for norfentanyl and fentanyl and 0.8–50 ng/mL for norbuprenorphine and buprenorphine, with all analytes exhibiting linearity over that range. Relative Standard Deviations (%RSDs) were calculated using 5 replicate extractions (1.5 ng/mL) and were under 4% for all four compounds. Limits of Detection (LODs) were calculated as 3 times the standard deviation of the lowest non-zero calibrator. Limits of Quantitation (LOQs) were chosen as 0.2 ng/mL for norfentanyl and fentanyl and 0.8 ng/mL for norbuprenorphine and buprenorphine.

**Table 1: The Yield, Matrix Effects, and Limit of Detection (LOD) are Listed for Norfentanyl, Norbuprenorphine, Fentanyl, and Buprenorphine**

Compound	Yield	Matrix Effects	LOD ng/mL
Norfentanyl	79%	-22%	0.022
Norbuprenorphine	89%	-38%	0.028
Fentanyl	88%	-57%	0.017
Buprenorphine	83%	-31%	0.280

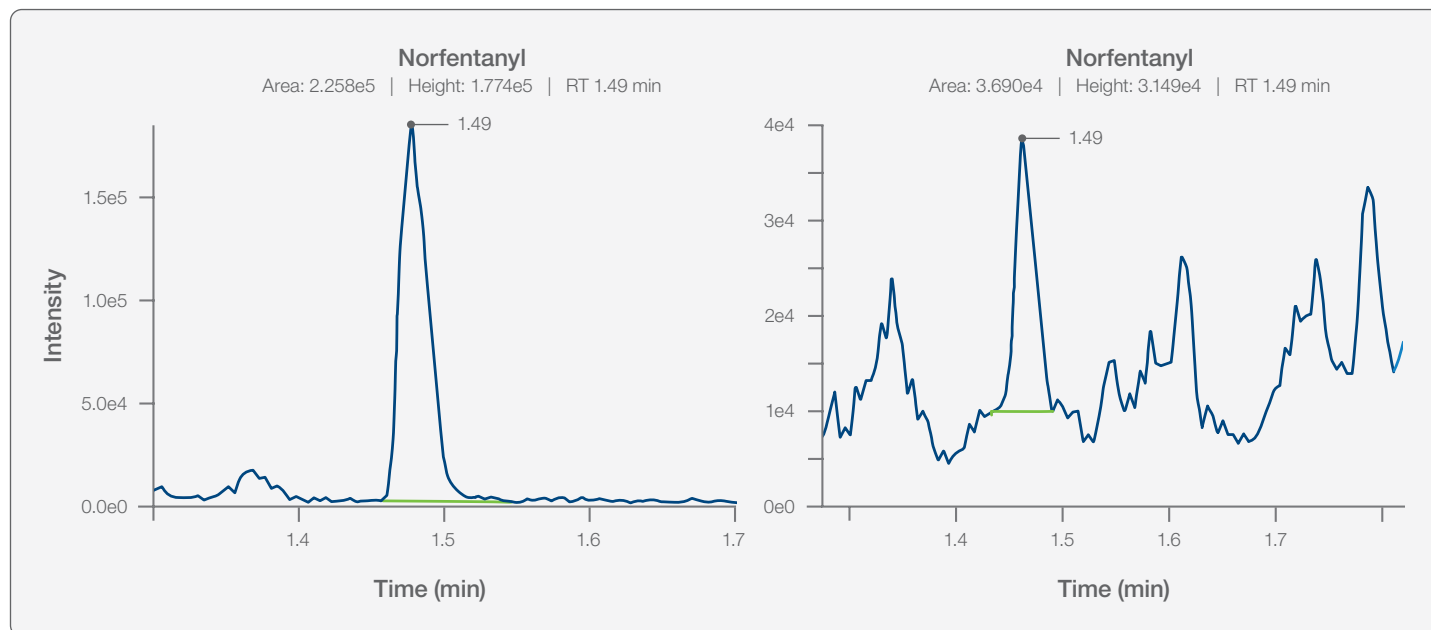


Figure 2: Norfentanyl quantities and qualifier chromatograms at LOQ of 0.2 ng/mL (233.2/84.1 left; 233.2/55.1 right).

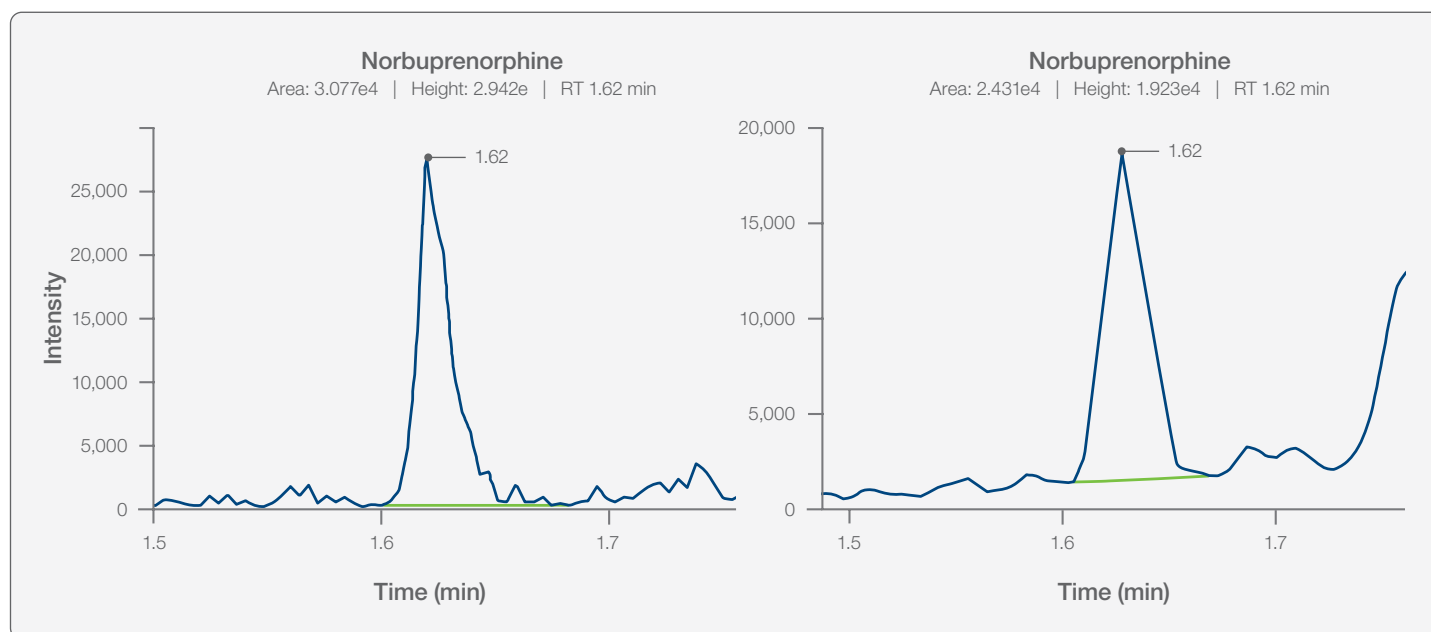


Figure 3: Norbuprenorphine quantities and qualifier chromatograms at LOQ of 0.8 ng/mL (414.2/152.1 left; 414.2/115.1 right).

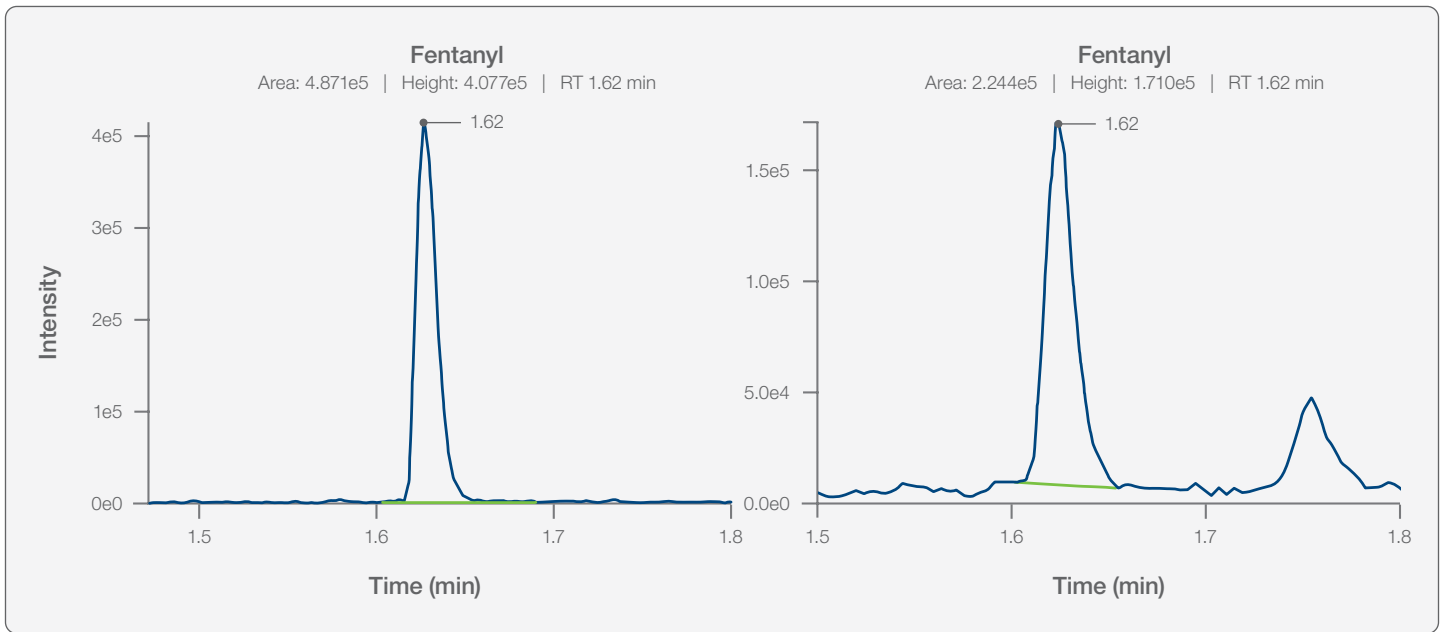


Figure 4: Fentanyl quantities and qualifier chromatograms at LOQ of 0.2 ng/mL ( 337.1/188.2 left; 337.1/105.1 right).

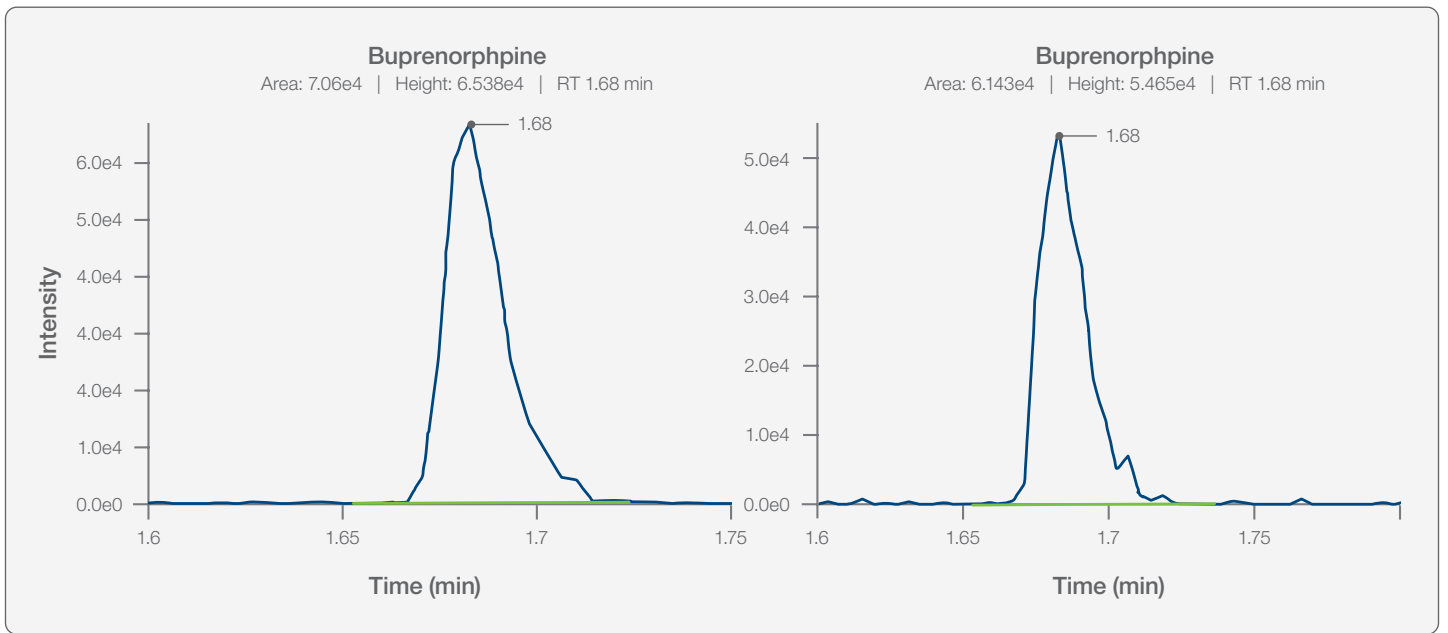
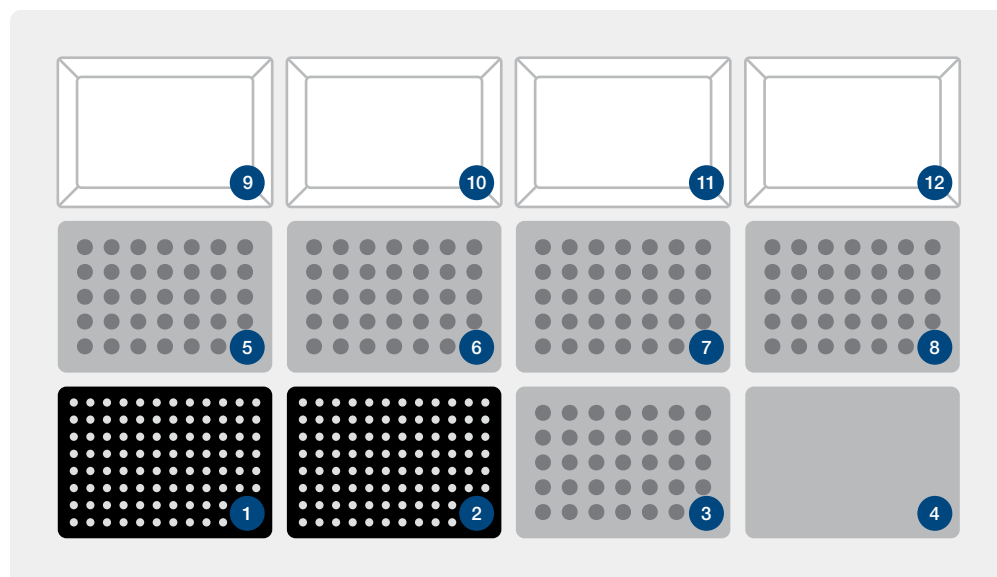


Figure 5: Buprenorphine quantities and qualifier chromatograms at LOQ of 0.8 ng/mL (468.3/396.2 left; 468.3/414.3 right).

## Conclusion

The SCX XTR method described herein requires more complex solvent preparation than the WAX method alternative, but it provides a greater reduction in matrix effects. When very high concentration factors are required, minimal matrix effects are pivotal in meeting the necessary cut-offs. This is often the case when laboratories do not have top-of-the-line instrumentation. This SCX XTR method can process up to 96 samples in under 15 minutes allowing for a fast, automated, and high throughput workflow. The method is robust, linear, and provides the necessary sensitivity to meet the majority of laboratories' needs.

## Deck Layout



- 1 XTR Tips
- 2 Hamilton CO-RE® 1 mL Tips
- 3 Condition
- 4 Empty Space
- 5 Sample: 200 µL Urine, 100 µL Acetate Buffer, 10 µL ISTD
- 6 Wash 1: 0.1 N HCl
- 7 Wash 2: MEOH
- 8 Elution: DCM/IPA/NH<sub>4</sub>OH
- 9 30% MEOH
- 10 100% MEOH
- 11 0.1 N HCl
- 12 78:20:2 DCM/IPA/NH<sub>4</sub>OH

The NIMBUS96 deck configuration includes reservoirs, well plates, and pipette tips to perform the fully automated DPX method.

## Product

To order the exact product in this application use this catalog number.

### Catalog:

DPX170178

### Description:

XTR Tips: 5 mg SCX (60 µm) in 1 mL Hamilton

To customize this product choose sorbent amount and tip format from the available options listed on our website.



info@dpxlabs.com



dpxtechnologies.com

©2020 Hamilton Company. All rights reserved.  
INTip is a trademark of DPX Technologies.  
All other trademarks are owned and/or registered by Hamilton Company in the U.S. and/or other countries.  
Lit. No. AN-2007-21 v1.0 – 08/2020

Page 4

# HAMILTON®

To find a subsidiary or distributor in your area,  
please visit, [www.hamiltoncompany.com/contacts](http://www.hamiltoncompany.com/contacts).

Web: [www.hamiltoncompany.com/robotics](http://www.hamiltoncompany.com/robotics)  
Email: [marketingrequest@hamiltoncompany.com](mailto:marketingrequest@hamiltoncompany.com)

**United States**  
+1-775-858-3000

**United Kingdom, Ireland**  
+44 (0) 121 272 92 80

**Brazil**  
+55 (11) 126 50562

**China**  
+86 21 6164 6567

**Denmark, Norway,  
Sweden, Finland**  
+46 (0) 8 410 273 73

**France**  
+33 184 008 420

**Germany, Switzerland,  
Austria, Benelux**  
+49 (089) 248 804 808

**Italy**  
+39 39 689 33 93

**Japan**  
+81 3 6435 6850

**Spain, Portugal**  
+34 930 186 262