

HUMAN HEALTH

ENVIRONMENTAL HEALTH



RUGGED, ROBUST,
AND RELIABLE
PERFORMANCE
EVERY DAY



Altus™ HPLC


PerkinElmer[®]
For the Better



CHROMATOGRAPHY FOR
THE WORK YOU DO



NOW EVERYONE IN YOUR LAB IS A CHROMATOGRAPHER

Altus HPLC



Food

The food, beverages, and nutraceuticals we consume come to us from all over the world. So ensuring that the global food supply is genuine, unadulterated, and free of contaminants is a critical undertaking. The Altus HPLC, running Waters® Empower® 3 software, enables your lab to better meet stringent FDA, EFSA, and impending FSMA requirements for food safety, without additional investment.

Environmental

Safeguarding the environment is important to all of us. The Altus HPLC solution delivers powerful integration algorithms that effectively detect and analyze low-level and complex sample results. Peak detection using a curvature approach is more sensitive than traditional integration.

Industrial/Fine Chemicals

In many different ways, advanced materials chemicals are playing a large – and growing – part in our lives. And government regulations are keeping pace. The Altus HPLC solution can help lower your operating costs by standardizing your workflows and platforms, all while improving efficiency, data quality, and lab productivity.

Today's laboratories want more from their liquid chromatography system: Higher performance. Better reliability. More consistent and comprehensive analytical workflows. And most of all, more predictable and reproducible results. At the same time, you want less complexity, hassle, and guesswork from those you count on for service and support.

More of what you're looking for in chromatography, and less of everything else: That's the Altus™ HPLC platform.

Based on proven technology at work in thousands of labs worldwide, the Altus HPLC delivers integrated fluidics in a low-dispersion design, with excellent reproducibility, peak capacity and resolution, and exceptional results. Optimized detection choices deliver extremely low detection limits for all the applications you need most. And productivity-boosting automation features – everything from simple system startup to automated sample management to tool-free maintenance – ensure that everyone in your lab can run analyses quickly and easily, taking full advantage of the Altus HPLC system's many strengths.

Put that together with the leading chromatography data software in the business and the industry's best, most knowledgeable service and support organization, and you can now run your chromatography with the utmost confidence.



WITH CHROMATOGRAPHY
THIS GOOD, THE RESULTS
JUST FLOW

The Altus HPLC platform is built to deliver robust, trouble-free operation – perfect for everyday analysis and for meeting stringent and ever-changing industry regulations and requirements.

Bigger sample capacity

The Altus HPLC system can handle up to 120 standard-size vials in five separate sample carousels. So whether you're running a quick one-off sample or a series of methods from different analysts, your sample queues are simple to set up and run. And the sample environment can be temperature controlled and is ideal for light-sensitive samples as well.

Easy to use

The Altus HPLC system's large built-in, easy-to-navigate user interface enables your scientists to take full advantage of its fast system setup procedures with SystemPREP™, for quick, one-touch walkup functionality. SystemPREP automatically readies the system to run samples – ideal for daily startups, when changing solvents, or after prolonged periods of system inactivity.

The system's solvent management feature also degasses and accurately blends up to four chromatographic solvents for pulse-free, effortless delivery. What's more, PerformancePLUS™ check-valve technology maximizes system uptime.

Built-in, integrated fluidics

The Altus HPLC system's integrated solvent and sample-management functions deliver consistent performance from system to system, for highly reproducible results. Automatic, continuous solvent compressibility provides accurate and precise solvent delivery and reproducible retention times, regardless of solvent.

What's more, the system's fluidics design ensures that accidental leakage and spills can be managed quickly and safely. And you decide needle wash duration, with no wash or rinse vials – making sample-carryover issues a thing of the past.

Thermal management

The column heating option uses integrated forced-air recirculation, making for an exceptionally stable column environment. With the passive column heating option, you have the confidence that your sample will be at the same temperature as the column.

KEEPING YOUR DETECTION OPTIONS OPEN

The Altus HPLC system delivers a full range of sensitive detection options – everything you need to analyze whatever compounds come your way. Whether you use each singly or in combination with other methods, you'll be able to glean more information per run than ever before.



UV/Vis Detector

A sensitive, flexible dual-wavelength absorbance detector, with the ability to identify and quantify low-level impurities in the same run as the analyte of interest.

Photodiode Array (PDA) Detector

Advanced optical detection with exceptional chromatographic and spectral sensitivity – perfect for performing peak-purity analysis, even under extreme conditions.

Refractive Index Detector

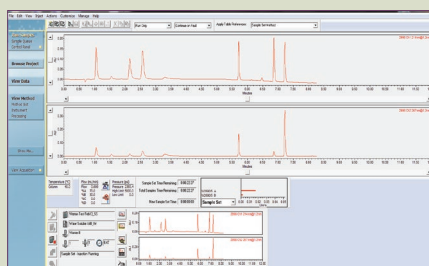
An effective tool for isocratic quantification of components with little or no UV absorption – just the thing for analyzing and quantifying food sugars.

Multifluorescence Detector

A great solution for environmental monitoring applications in which increased sensitivity and maximum selectivity are required.



The Altus A-10 UV is the most sensitive and versatile wavelength detector available for HPLC.



The full line of Altus A-10 detectors are fully controlled via Empower® 3 software for all chromatographic and spectral processing functions.



The Altus A-10 FL detector is ideal for quantifying low concentrations of naturally fluorescent or derivatized compounds.



WHAT BRINGS US TOGETHER SETS US APART

Chromatography data software with an edge

Chromatography data software (CDS) has one simple purpose: to deliver the highest degree of confidence in your results. And simply put, Empower® 3 software brings it all together. The most versatile CDS in the business, it's also the easiest to use, delivering extraordinary results with minimal training, workflow reengineering, or additional software modules to support new instruments or techniques.

Empower® 3 software also provides customizable reports, integrated custom fields and calculations, and online help, too, while providing industry-leading security and data integrity.

All the functionality you need – and more

Empower® 3 delivers all the functionality you need, with unique interface options that are geared to each individual user in your lab, novice and expert alike. Once your users log in, they're greeted with the interface that's appropriate to their tasks and skill levels.

Workflow-driven, user-centric QuickStart™ interface

The single-window Empower® 3 QuickStart™ interface allows all your users to perform tasks that match their skill level, with no confusion. You can develop new methods, including PDA and MS data extraction, customize reports, manage data, and receive results and notifications by email.

The QuickStart™ interface streamlines the collection, processing, reviewing, and reporting of chromatographic results. Capabilities provided through the interface include:

- Instrument control and data acquisition
- Peak detection (including the ApexTrack™ peak detection algorithm for consistent results)
- Quantitation
- GPC processing and calculations
- Data review
- Data searching
- Mass spectrometry
- Custom reporting

One software package for multiple requirements

Empower® 3 software enables you to manage data generated by all your instrumentation, plus run mission-specific applications, including optional method development and validation, integrated chemical structures, and polymer analysis.

The software features the ApexTrack™ peak detection algorithm, enhancing peak integration capabilities, with excellent detection of poorly resolved or low-level peaks on noisy or sloping baselines, so you can process data efficiently with little or no manual intervention required. Plus, it controls a wide range of multivendor systems – HPLC, UHPLC, IC, GC, CE, and more – allowing you to maximize your investment in CDS technology.

The right accessories, consumables methods and application support

Whether you're conducting routine raw materials confirmation or performing the most demanding applications, our top priority is to help improve efficiency, control costs, and optimize your analysis. We have the consumables and accessories for applications in atomic spectroscopy, materials characterization, and chromatography and mass spectrometry, and our comprehensive portfolio of solutions is designed to ensure you receive accurate, repeatable results – on time, every time – throughout the lifetime of your instrument.

Everything you need under one roof

When you engage with us, you're benefiting from multivendor service and support from the absolute best in the business. Thousands of certified technicians in the field, who are familiar with all the techniques you employ. More than 400,000 multivendor assets under our care. And operations in more than 120 countries across the globe.

Analytic method services, asset procurement and disposition, business intelligence, qualification and validation, lab relocation, and, of course, instrument service and repair – all these services and more, plus a deep-seated knowledge of the business requirements of our customers, uniquely qualify us to help empower your science and drive your business.



Brownlee SPP Superficially Porous Particle Technology

With Brownlee SPP columns, you can achieve sharper peaks and faster separation results without worrying about high backpressure or compromising column longevity. Unlike other columns, Brownlee SPP columns use 2.7 µm particles comprised of a thin outer shell of high-quality porous silica fused to a solid inner core. This advanced design allows for a shorter diffusion path, keeps backpressure to a minimum, and improves column efficiency.



Certified LC Clean™ Vial, Cap, and Septa Kits

We have a variety of LC-certified vials, caps, and septa made from the finest materials to ensure that you experience accurate and dependable measurements. Our vials are made from Type 1 Borosilicate glass, which conforms to all USP, JP, and EP requirements. Each product is manufactured using strict quality-control standards and is packed in a clean environment to ensure that it arrives contaminant-free.

Want more from your LC/GC solutions? You're in good company.

Learn more at: www.perkinelmer.com/altushplc

PerkinElmer, Inc.
940 Winter Street
Waltham, MA 02451 USA
P: (800) 762-4000 or
(+1) 203-925-4602
www.perkinelmer.com



For a complete listing of our global offices, visit www.perkinelmer.com/ContactUs

Copyright ©2015, PerkinElmer, Inc. All rights reserved. PerkinElmer® is a registered trademark of PerkinElmer, Inc. All other trademarks are the property of their respective owners.

012040_01

PKI